

BLOCK 20



BLOCK 20

www.clongriffin.ie

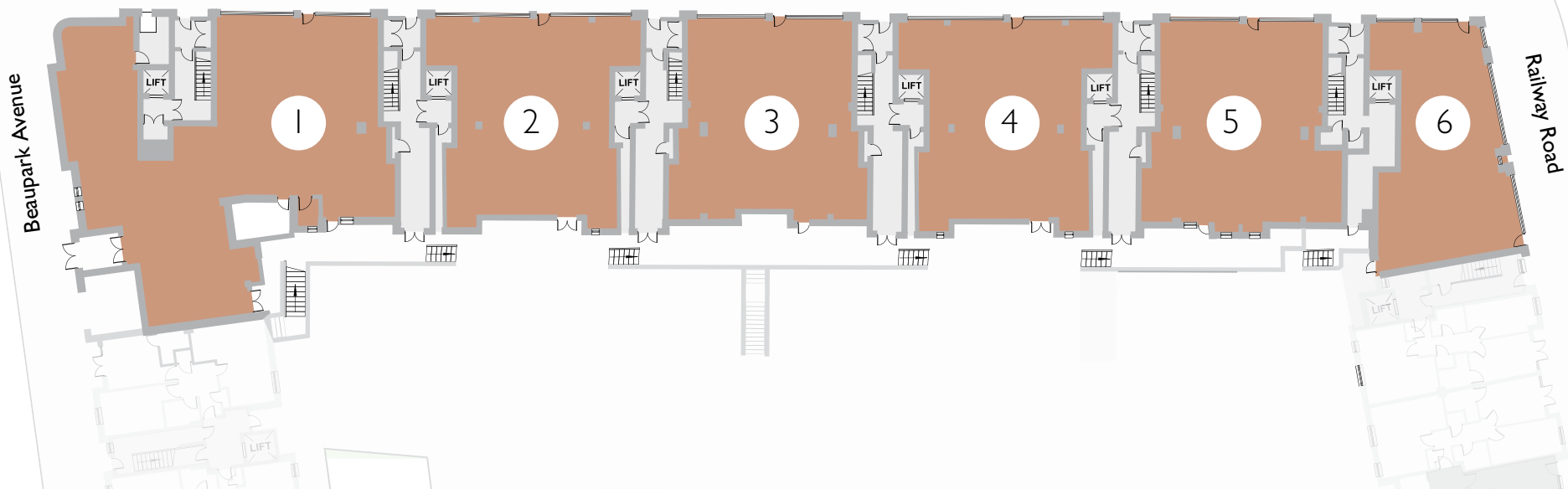
Block 20 is excellently positioned on the south west corner of the Town Square and at the top of Main Street. Pedestrian lifts to the 400 space underground Park and Ride are located in close proximity to the block. There are 5 retail units with excellent profile to Main St, as well as a Bank. All units have set-down parking in front, and service yards to the rear.

UNIT NO	SQ.M.	SQ.FT.
Bank / Unit 1	313	3,370
Retail Unit 2	296	3,186
Retail Unit 3	158	1,700
Retail Unit 4	140	1,503
Retail Unit 5	156	1,675
Retail Unit 6	112	1,205

N



Main Street



Joint Agents:



DISCLAIMER: Joint Agents Finnegan Menton and HT Meagher O'Reilly for themselves and for the vendors or lessors of this property whose agents they are give notice that: 1: In the event of any conflict between the particulars and the contract or conditions of sale, the contract or the conditions of the sale shall prevail. 2: All descriptions, dimensions references to conditions and any necessary permission for use and occupation and other details are given in good faith and are believed to be correct, but any intending purchasers or tenants should not rely on them as statements or representations of fact but must satisfy themselves by inspection or otherwise as to the correctness of each of them. 3: The particulars are set out as general guidance for the intending purchaser or lessor and do not constitute, nor constitute part of an offer or contracts. 4: No person in the employment of either Finnegan Menton or HT Meagher O'Reilly has any authority to make or give any representation or warranty whatever in relation to the property. 5: Prices are quoted exclusive of VAT (unless otherwise stated) and all negotiations are conducted on the basis that the purchaser/lessee shall be liable for any VAT arising on the transaction. 7: All maps reproduced by permission of the Ordnance Survey Ireland - Licence Number AU0044104